



HARDWARE BROCHURE

1ST SEPTEMBER 2021



CONTENTS

1. YEALINK IP PHONES

1.2 YEALINK DECT PHONES

1.3 YEALINK CONFERENCE PHONES

1.4 YEALINK ACCESSORIES

2.1 GRANDSTREAM IP PHONES

2.2 GRANDSTREAM ACCESSORIES

3.1 GIGASET IP PHONES

3.2 GIGASET DECT PHONES

3.3 GIGASET ACCESSORIES

4. JABRA HEADSETS

5. EPOS HEADSETS

6. POLY HEADSETS

Yealink

The Yealink range of products are highly affordable, excellent in quality and feature rich, with rapid technical support and auto-provisioned. From the award-winning Yealink range, we offer a range to suit all budget and capabilities, including desktop business class HD colour screen models and a cutting-edge touchscreen IP media phone, to clever Dects which offer similar features to the desktop hardware.



T33G

- Dual-port Gigabit Ethernet
- 2.4" backlit LCD display
- PoE support
- Opus codec support
- Up to 4 SIP accounts
- Local 5-way conferencing
- Supports EHS Wireless Headset
- Support YDMP/YMCS
- Wall mountable



T42U

- Backlit 2.7" LCD display
- Dual USB ports
- Opus codec support
- Up to 12 SIP accounts
- PoE support
- Dual-port Gigabit Ethernet
- USB headset and EHS support
- Wi-Fi via WF40/WF50
- Bluetooth via BT40/BT41
- Wall mountable



T43U

- Up to 12 SIP accounts
- 2.7" 192x64-pixel graphical LCD with backlight
- Dual-port Gigabit Ethernet
- USB 2.0
- PoE support
- Headset, EHS support
- Integrated stand with 2 adjustable angles
- Wall mountable



T46U

- 4.3" backlit colour display
- Dual USB ports
- Dual firmware images
- Up to 16 SIP accounts
- Dual-port Gigabit Ethernet
- USB headset and EHS support
- Wi-Fi via WF40/WF50
- Bluetooth via BT40/BT41
- USB recording
- Wall mountable



T48U

- 7" colour touch screen with backlight
- Optima HD voice with Acoustic Shield and Smart Noise Filtering
- Up to 16 SIP accounts
- PoE support
- Wi-Fi via WF40/WF50, Bluetooth via BT41
- Dual USB ports, dual-port Gigabit Ethernet
- Headset, EHS support



T57W

- Built-in Wi-Fi 2.4G/5G and Bluetooth 4.2 for wireless headsets connection
- 7" 800 x 480 capacitive adjustable touch screen
- Up to 16 VoIP accounts
- Corded Cordless Phone supports DECT handset compatibility via a DECT dongle



T58A

- 7" (1024 x 600) touchscreen
- 720p30 HD video
- Built-in Bluetooth 4.0+ & Wi-Fi (802.11b/g/n)
- Integrated Gigabit Ethernet and Built-in web browser
- USB port for USB headsets, media and storage applications
- Up to 16 VoIP accounts



T58V

- T58V supports a CAM50 in addition to give you inbuilt video conferencing functionality.
- 7" (1024 x 600) capacitive adjustable touchscreen
- 720p30 HD video
- Built-in 2.4G/5G Wi-Fi (802.11a/b/g/n/ac)
- USB 2.0 port for USB headset



T53

- HD voice: HD handset, HD speaker
- Adjustable High-Resolution Display
- Acoustic Shield technology
- Corded Cordless Phone
- Advanced Wireless Connectivity
- Dual-port Gigabit Ethernet



T54W

- Built-in Wi-Fi and Bluetooth 4.2 for wireless headsets connection
- 4.3" 480 x 272-pixel colour display with backlight
- HD Voice: HD Codec, HD speaker, HD handset
- T53/T53W/T54W/T57W firmware unified

Yealink DECT PHONES



W53P

The Yealink W53P, being a high-performance SIP cordless phone system, is the ideal solution for small and medium-sized businesses. Paring with up to a total of 8 Yealink W53H DECT handsets, it allows you to enjoy superb mobility and efficient flexibility immediately as well as significantly eliminates additional wiring troubles and charges. To provide a better and higher performance, this DECT IP phone not only supports up to 8 SIP accounts and 8 concurrent calls, but also speeds up its startup and signal connection, slashes its upgrade downtime as well.

- Call hold/transfer
- 3-way conference
- Switching between calls/Call waiting
- Mute/Silence/DND
- Up to 2 simultaneous calls/handsets
- Indoor Range: 50m (in ideal conditions)
- Outdoor Range: 300m
- Charger included



W60P

Discreet, portable and wall mountable, the W60 DECTbase fits seamlessly into any office while the W56H handset it small enough to be carried around in the pocket of a user as they walk freely around their workspace. With additional features from the W52 including: longer range, quicker charging and transfer abilities, you can be as efficient as a desk phone, yet fully mobile. Supplied with a W60 Base station and charger.

- Call hold/transfer
- 3-way conference
- Switching between calls/Call waiting
- Mute/Silence/DND
- Up to 8 simultaneous calls/handsets
- Indoor Range: 20m~50m (The ideal distance is 50m)
- Outdoor Range: 300m
- Quick charging: 10-min charge time for 2-hour talk time
- Charger included



W79P

The Yealink W79P, being a high-performance SIP cordless phone system, which can register 10 Yealink ruggedized DECT W59R handsets, and keep stable in the complicated and harsh locations. Featuring more functions, lines and mobility, it supports up to 10 SIP accounts and 20 simultaneous calls, with integrated Bluetooth and vibration alarm to provide a stable and good experience for your mobile communications.

- Up to 10 DECT cordless handsets and 10 SIP accounts
- Up to 20 simultaneous calls to ensure that each handset can make two calls
- DECT radio coverage up to 50m indoors and 300m outdoors
- Energy-saving ECO features
- Built-in Bluetooth and vibration alarm



W53H

- 1.8" 128x160 TFT colour screen with intuitive user interface with backlight and keypad lock.
- Headset connection via 3.5 mm jack.
- Up to 18 hours talk time (in ideal conditions).



W56H

- 1.8" 128x160 TFT colour screen with intuitive user interface with backlight and keypad lock.
- Headset connection via 3.5 mm jack.
- Up to 18 hours talk time (in ideal conditions).



W59R

- Rugged DECT handset with IP67 protection rating
- Scratch resistant, disinfectant resistant
- 1.8" 128x160 TFT colour screen with intuitive user interface
- HD voice and FNR (Flexible Noise Reduction)
- Built-in Bluetooth
- Vibration alarm
- Alarm functions for occupational safety



RT30

Yealink DECT repeater RT0 can be deployed to extend the DECT radio coverage of Yealink W52P/W56P base stations significantly in all directions.

- Compatible with DECT CAT-iq 2.0
- Compatible with Yealink W60B or W52 base stations (sold separately)
- Up to six (6) repeaters per base station Star connection
- Up to two (2) repeaters can be arranged in cascade



DD10K

Yealink DD10K DECT USB Dongle enables T41S or T42S phones to work concurrently with the Yealink DECT system. It also enables T53, T53W, T54W, T57W or T58A phones to work as a base station, which can be registered with up to four (4) compatible Yealink W52H, W56H or W53H handsets. Compatible with:

- T53, T53W, T54W and T57W
- T41S and T42S with FW 66.82.0.35 or later
- T58A with FW V83 or later

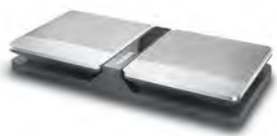


W80B

The Yealink W80 DECT IP Multi-Cell System provide the organizations who require wireless coverage with the full ease of deployment. It intends to create an extremely scalable and reliable solution for the organisations of any size and any shape.

- Compatible with DECT CAT-iq 2.0
- Compatible with Yealink W56H, W53H and CP930W (sold separately)
- DECT radio coverage up to 50m indoors and 300m outdoors

Yealink CONFERENCE PHONES



CPW90

- Wireless Expansion Mic which works as an audio input device for the Yealink CP960 conference phone
- Supports 360-degree voice pickup range at a radius of up to 10 feet (3 meters)
- Optima HD voice
- Capacitive mute touchpad



CP920

- Optimal HD audio, full duplex technology
- 3.1" 248x120-pixel graphical LCD with backlight
- Yealink Noise Proof Technology
- 20ft range & 360 degree voice pickup
- Power over Ethernet
- 5-way conference call, hybrid UC meeting
- Built-in Wi-Fi (2.4GHz, 802.11.b/g/n)



CP930W

- Optimal HD audio, full duplex technology
- 3.1" 248x120-pixel graphical LCD with backlight
- Built-in 3-microphone array
- Yealink Noise Proof Technology
- 20ft range & 360 degree voice pickup
- Power over Ethernet
- 5-way conference call, hybrid UC meeting
- Built-in Wi-Fi (2.4GHz, 802.11.b/g/n)



CP960

- Optimal HD audio, full duplex technology
- Yealink Noise Proof Technology
- 20-foot (6-meter) and 360-degree microphone pickup range
- Two optional Wireless Expansion Microphones (CPW90)
- Built-in 3-microphone array
- 5-inch multi-touch screen with 720 x 1280 resolution
- 5-way conference call

BUNDLES

It is time to optimize your conference room with Yealink latest conference phone bundles. With user-centric design philosophy, these products combines simplicity of use with sophistication of features, being perfect for any team environment, especially for medium to large conference room. The Yealink CP conference phones bundles deliver a smarter audio conferencing solution for your company.



CP930W BASE + W60B

Employing DECT technology, the Yealink CP930W Wireless DECT Conference Phone allows you to hold meetings wherever or whenever is convenient for you. Working with Yealink W60B base station, which owns the DECT radio coverage up to 50m indoors, CP930W can be provided with good and stable signal.

- W60B: up to 8 DECT cordless handsets; up to 8 concurrent calls.
- CP930W: up to 24-hour talk time; 4 hours charging time; 20-foot (6-meter); 5-way conference call.



CP960-W BUNDLE

First-class, high performance device for mid-large meeting rooms with up to 20 people, the Yealink CP960W bundle includes Yealink CPW90 Wireless Microphone, allowing up to 66 ft(20m) away from CP960 and 10 ft(3m) voice pick up. It includes:

- 1 x CP960 unit with built-in 3-microphone array, 5-inch multi-touch screen with 720 x 1280 resolution and 5-way conference call
- 1x Wireless Microphone Expansion Units

Yealink ACCESSORIES



EXP40

The Yealink EXP40 expansion module is designed to be used with the Yealink T4 Series of IP desk phones, expanding the functional capability of your sip phone to a whole new level. It features a large graphic LCD, two pages of 20 flexible buttons are shown on the display can be programmed up to 40 various features, the productivity-enhancing features include BLF/BLA, speed dialing, call forward, transfer, park, pickup, etc.



EXP50

The Yealink EXP50 expansion module is designed to be used with the Yealink T5 Series of IP desk phones. Is designed to expand the functional capability of your SIP phone to a whole new level. It features a large 4.3-inch colour-screen LCD, giving you a vivid visual experience. In addition, it provides you with a simple user interface and advanced call handling capabilities. For example, three pages of 20 flexible button shown on the display can be programmed up to 60 various features.



PSU UK3W
(T33G)
£6.00



PSU UK6W
(T42U, T43U, T53)
£6.00



PSU UK10W
(T46U, T48U, T54W)
£8.00



UH34 LITE MONO

- Mono headset
- Plug-and-play
- USB connectivity
- HD Voice/Wideband speaker performance
- Noise-canceling microphone and passive noise cancellation
- ActiveProtection technology safeguards users from acoustic injury
- Integrated LED indicator and warning tone
- 320° bendable boom arm for easy adjustment without breaking

NOTE: USB-C and 3.5mm jack included



UH34 LITE DUAL

- Stereo headset
- Plug-and-play
- USB connectivity
- HD Voice/Wideband speaker performance
- Noise-canceling microphone and passive noise cancellation
- ActiveProtection technology safeguards users from acoustic injury
- Integrated LED indicator and warning tone
- 320° bendable boom arm for easy adjustment without breaking

NOTE: USB-C and 3.5mm jack included

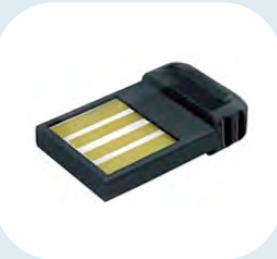


UH36 BINAURAL

Yealink UH36 Binaural is a Binaural RJ9 & USB Headset for Microsoft Teams, a great device for workers using UC solutions and IP phones both at home and in the office.

- Microsoft Teams Compliant
- Compatible with Yealink IP phones, PCs, Laptops, Tablets & Smart Phones
- High quality headset with HD voice/wideband audio
- Carry bag and a removable controller for USB usage included

NOTE: USB-C and 3.5mm jack included



BT41

The BT41 bluetooth dongle provides connectivity with bluetooth headsets and is compatible with the Yealink T41S, T42S, T46S and T48S Gigabit SIP telephone.



EHS40

- Wireless headphone adapter
- Compatible with Yealink Jabra, Plantronics, Sennheiser
- Control call through wireless headset
- Plug and play
- Easy to use



EHS36

- Compatible with T48S/T48G/T46S/ T46G/ T42S/T41S
- Compatible with Jabra & Plantronics
- Control phone through wireless headset
- Plug and play



WF40

USB WIFI DONGLE

The WF40 dongle is a compact, low-power device which allows for the seamless integration of IP phones into wireless networks. Available for T48S only.



WF50

USB WIFI DONGLE

Yealink WF50 is the next-generation Wi-Fi USB Dongle, designed to allow users to select whether to connect to a 2.4GHz (150 Mbps) Wi-Fi network or a 5GHz (up to 433 Mbps). Compatible with SIP-T41S/T42S/ T46S/T48S/T53.



Grandstream's high-end products are designed for users who are often on the phone and need access to advanced features, line support and usability options. Get more done, handle more calls, and keep in touch with more people.

Their products are flexible, user-friendly, and innovative, and enhance productivity for businesses regardless of size or industry.



GRANDSTREAM IP PHONES



GXV3370

The Grandstream GXV3770 is a powerful desktop Video IP Phone. It runs on Android 7.0 and has flexible SDK support for custom apps. It allows users access to many Android Applications in the Google Play Store.

- 16 lines with up to 16 SIP accounts
- Built-in mega-pixel camera for video
- Runs on Android 7.0 operating system
- Built-in Bluetooth for syncing with mobile devices and connecting Bluetooth headset
- Dual-switched auto-sensing 10/100/1000Mbps network ports
- Integrated dualband Wi-Fi (2.4GHz & 5GHz)



GXV3380

The Grandstream GXV3380 is a powerful, high-end video phone for Android. It combines a 16-line IP video phone with a multi-platform video collaboration solution and the functionality of an Android tablet, to offer an all-in-one communications solution.

- Built-in 2 megapixel camera for video calling with privacy shutter
- Integrated dualband Wi-Fi (2.4GHz & 5GHz)
- Colour IPS LCD with TP
- 7-way HD audio conferencing and 3-way 1080p 30fps HD video capability
- Built-in Wi-Fi and Bluetooth
- 16 SIP accounts / lines



WP820

The WP820 is a portable Wi-Fi phone designed to suit a variety of enterprises and vertical market applications, including retail, logistics, medical and security.

- Dual-band 802.11a/b/g/n Wi-Fi
- Advanced antenna design and roaming
- Integrated Bluetooth for pairing with headsets and mobile devices
- Micro USB port and 3.5mm headset jack
- 2 SIP accounts, 2 lines

GRANDSTREAM ACCESSORIES



ATA ADAPTER HT801

The HT801 analogue telephone adapter (ATA) allows users to create a high-quality and manageable IP telephony solution for individual analogue phones in a home or office application. The product features 1 FXS port and 1 10/100Mbps port to extend VoIP services to an analogue phone.

Supports up to 1 SIP account

IMPORTANT NOTE: YOU NEED TO ALLOCATE AN ADDITIONAL EXTENSION FOR THIS PRODUCT.

Gigaset

Made from a black polymer and with German quality and engineering, the Maxwell range is compact, stylish, uniform, and robust. You can also choose to have your Maxwell phone either free standing on a desk (with the Basic, 2, and 3 models offering up to three desktop angles), or have it wall-mounted via an optional bracket.

Unlike other IP phones on the market, the Maxwell range's wall-mounting abilities makes them the perfect choice for prestige environments such as hospitality and corporate boardrooms.

The Gigaset pro Maxwell IP phones are flexible, user-friendly, and innovative, and enhance productivity for businesses regardless of size or industry.

Gigaset IP PHONES



MAXWELL BASIC

Maxwell Basic provides all the essential features needed within a professional desktop phone ready for any office environment. Featuring full HD audio, Maxwell Basic is designed for everyday use without compromising audio quality.

- High contrast 2.5" screen for crystal clear text
- Wall mountable
- 1Gb network switch
- POE or PSU power



MAXWELL 2

A business quality VoIP phone must be intuitive, attractive and always ready to support your business. The Gigaset Maxwell 2 business phone provides all those qualities in this VoIP desktop model designed to work with any on-premise or cloud based telephone system.

The Maxwell 2's lightweight handset supports HD audio and voice, so you need not miss a single word. Volume keys ensure the right audio level and you can toggle between hands-free and the headset by merely pressing the dedicated button.

- ComPact 3.5" HD colour screen
- Wall mountable
- 1Gb network switch
- POE or PSU power



MAXWELL 3

Maxwell 3 offers a compact yet powerful desktop phone with the professional features to suit any business or home office environment. Featuring full HD audio, 'do-not-disturb' 'navi'-key and keys with call status. These useful features are well positioned around a crystal clear display, which makes Maxwell 3 the perfect choice for modern digital communication.

- Compact 3.5" HD colour screen
- Wall Mountable
- Built in compatibility with wide range of wired accessories including headsets via EHS/DHSG
- 1Gb network switch



MAXWELL 4

Designed for flexible communication it, combines a touch screen with traditional keypad, being perfect for both desktop users and busy receptionists.

- The 4.3" full colour and high contrast capacitive touch screen
- Built in compatibility with wide range of wired accessories including headsets via EHS/DHSG, standard RJ-9 jack or USB
- Wall Mountable

NOTE: Bulk orders only. Please contact your Account Manager for more information.



MAXWELL C

As DECT cordless phones are well established in office environments, the Maxwell C is one of a kind following this wireless theme as it's Gigaset pro's most advanced cordless phone in a Maxwell housing; either to walk around with or to use as a permanent desktop device which can now be connected to a Gigaset pro DECT single or multicell system.

- Large 2.8" TFT-colour display with modern user interface
- Full compatibility with Gigaset N510 Single and N720 DECT IP multicell systems
- Headset connection via Bluetooth® or via RJ9 connector

Gigaset DECT PHONES



S650H PRO

- Functional, office orientated design
- Improved scratch resistant 1.8" TFT display
- Optional charging base



R650H PRO

- 1.8" TFT illuminated display
- Up to 14 hours of talk time
- Excellent HD audio quality; Gigaset HDSP™



SL750H PRO

- Effortless call management with audio profiles
- Large 2.4" TFT illuminated display
- Small & compact design
- Protection against scratches and common disinfectants

GIGASET DECT IP PRO MULTICELL SYSTEM

The Gigaset DECT IP PRO Multicell System is an innovative breakthrough solution that combines DECT base stations and a DECT manager to create a highly scalable yet reliable solution for organisations that need guaranteed mobile communication across sites of any shape or size.

It supports multiple stations and multiple handsets can be connected to the DECT manager, enabling wireless mobility with seamless handover and roaming in on-site communication.

The DECT IP PRO Multicell Systems supports the latest generation of Gigaset DECT handsets, meaning users benefit from mobility in communication with exceptional HD sound. A broad range of compatible Gigaset handsets is available for different business requirements.



N670 IP PRO

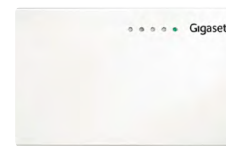
- Single cell system up to 20 users / SIP accounts / handsets (via License upgrade to N670 multi-cell with up to 250 users)
- Up to 8 parallel calls
- Central management of up to 300 N670 in different locations by N870 Integrator software
- Professional zero-touch configuration via auto-provisioning
- LEDs on front for status and visual power check



N870 IP CELL

The N870 DECT multicell system supports up to 250 (20.000) handsets and 60 (6.000) simultaneous calls making it ideal for small and medium organisations.

- One hardware concept, settings define function
- Up to 10 simultaneous calls per base
- Up to 800 users / SIP accounts / handsets
- Up to 240 base stations
- Up to 240 parallel calls
- Up to 20 N670
- Seamless handover and roaming
- Sync over the Air and Sync over LAN
- Professional zero-touch configuration via auto-provisioning



N720 IP PRO

BASE STATION

- Seamless handover and roaming
- Up to 100 users / SIP accounts / handsets
- Exceptional HD sound with HDSP™1,2
- Up to 20 base stations
- Up to 30 parallel calls
- 8 simultaneous calls per base (4 in G.722 HDSP™ mode)
- Local network directory and public online directories (white and yellow pages)
- Email reader
- Professional zero-touch auto-provisioning setup
- Power over Ethernet
- Required in addition to your DECT solution



N720 DM PRO

DECT MANAGER

- Seamless handover and roaming
- Up to 100 users / SIP accounts / handsets
- Exceptional HD sound with HDSP™1,2
- Up to 20 base stations
- Up to 30 parallel calls
- 8 simultaneous calls per base (4 in G.722 HDSP™ mode)
- Local network directory and public online directories (white and yellow pages)
- Email reader
- Professional zero-touch auto-provisioning setup
- Power over Ethernet
- Required in addition to your DECT solution

N510 IP PRO

- DECT IP base station with up to 6 VoIP accounts
- Expandable phone system for up to 6 users: Multiline calling with up to 6 handsets and 4 parallel calls
- '0'-touch configuration with Gigaset PBX. Also compatible with a wide range of established VoIP providers and PBXs.
- Power over Ethernet and power supply.

Gigaset ACCESSORIES



MAXWELL EXPANSION UNIT INC. PSU



MAXWELL PSU

Jabra

Find a headset that suits your working style. Choose from affordable corded headsets and handy wireless headsets that let you leave your desk while on a call. All headsets are available in a QD version for your desk phone or a USB version for your computer, providing a versatile solution to your working requirements. Wireless headsets come in both Bluetooth and DECT versions, so you can ensure your connection is never interrupted, and calls with those all-important customers run as smoothly as possible. What's more, you can choose noise-cancelling call centre headphones to ensure you can focus on the task at hand.



BIZ 2300 MONO

- Corded connection and monaural headset
- Flexible mic boom and FreeSpin 360° rotation for optimum positioning
- Crystal Clear Sound and noise-cancelling microphone
- HD wideband audio and PeakStop acoustic protection
- Kevlar reinforced cable
- HD voice - Wideband Audio
- QuickDisconnect compatible for desktop phones



BIZ 2300 DUO

- Corded connection and binaural headset
- Crystal Clear Sound and noise-cancelling microphone
- HD wideband audio and PeakStop acoustic protection
- Winner of product of the year at the 2014 TMC Unified Communications awards
- Kevlar reinforced cable
- HD voice - Wideband Audio
- QuickDisconnect compatible for desktop phones



BIZ 2300 MONO USB

- USB connection included for desktop Soft-Client use and monaural headset (no handset requirement)
- Flexible mic boom and FreeSpin 360° rotation for optimum positioning
- Crystal Clear Sound and noise-cancelling microphone
- HD wideband audio and PeakStop acoustic protection
- Kevlar reinforced cable
- HD voice - Wideband Audio
- QuickDisconnect compatible for desktop phones



BIZ 2300 DUO USB

- USB connection included for desktop Soft-Client use and binaural headset (no handset requirement)
- Crystal Clear Sound and noise-cancelling microphone
- USB connection included for desktop Soft-Client use and binaural headset (no handset requirement)
- HD wideband audio and PeakStop acoustic protection
- Winner of product of the year at the 2014 TMC Unified Communications awards
- Kevlar reinforced cable
- HD voice - Wideband Audio



PRO 920 MONO

- Cordless headset for desk phones
- One ear frame
- Range of 120m
- Talk time of 8 hours
- Compatible with nearly all analogue and digital desk phones
- Intuitive buttons on headset for call answering/ending, volume, mute
- Automatic switch-off for energy saving
- Incorporates Jabra Safetone® technology for audio protection
- Battery status indicator



PRO 920 DUO

- Binaural Cordless headset for desk phones
- Duo ear frame
- Range of up to 120m
- Noise cancelling microphone
- Easy to install with voice prompts
- Supports 4-way conferencing
- Talk time of 8 hours
- Fully charges in less than 3 hours with battery status indicator
- Automatic switch-off for energy saving



PRO 930 MONO USB

Cordless DECT headset for PC communications with USB connection

- One ear frame
- Wideband sound
- Range: up to 120m
- Noise cancelling microphone
- Button for answering/ending calls
- Supports 4-way conferencing



PRO 930 DUO USB

Cordless DECT headset for PC communications with USB connection

- Duo ear frame
- One ear frame
- Wideband sound
- Range: up to 120m
- Noise cancelling microphone
- Button for answering/ending calls
- Supports 4-way conferencing



Jabra HEADSETS



EVOLVE 65 MONO INC. CHARGING STAND

The Charging Stand for Jabra Evolve 65 provides easy and convenient charging and storage at the desk.

- One ear frame
- Charging time Max. 120 minutes
- Warranty 2 years
- Wireless Bluetooth device
- Operating range Up to 30 m/100 ft
- Connection (mini jack, USB, etc.) USB/Bluetooth
- Talk time
- Up to 10 hours
- Standby time Up to 15 days



EVOLVE 65 DUO INC. CHARGING STAND

The Charging Stand for Jabra Evolve 65 provides easy and convenient charging and storage at the desk.

- Duo ear frame
- Charging time Max. 120 minutes
- Warranty 2 years
- Wireless Bluetooth device
- Operating range Up to 30 m/100 ft
- Connection (mini jack, USB, etc.) USB/Bluetooth
- Talk time
- Up to 10 hours
- Standby time Up to 15 days



EVOLVE 65 MONO

The Jabra Evolve 65 MS is a Bluetooth mono wireless headset designed for use with PC and mobile phone/tablet applications.

- One ear frame
- Optimized for Microsoft Lync
- Noise-cancelling technologies, wideband audio and DSP for conversation clarity
- E-STD microphone sensitivity
- Bluetooth v3.0
- Range: up to 30m/100m
- NFC enabled for quick pairing



EVOLVE 65 DUO

The Jabra Evolve 65 MS is a Bluetooth duo wireless headset designed for use with PC and mobile phone/tablet applications.

- Duo ear frame
- Optimized for Microsoft Lync
- Noise-cancelling technologies, wideband audio and DSP for conversation clarity
- E-STD microphone sensitivity
- Bluetooth v3.0
- Range: up to 30m/100m
- NFC enabled for quick pairing



GN 1200 CURLY RJ9 PLUG £15

EPOS HEADSETS



SC 635 USB MONAURAL

- Monaural headset
- USB & 3.5mm jack Connectivity
- Acoustic protection ActiveGard™
- Intensive use
- HD sound quality
- Lightweight and rugged: frame made from stainless steel and aluminium with reinforced Kevlar cable
- Leather earpads



SC 665 USB BINAURAL

- Stereo headset
- USB & 3.5mm jack Connectivity
- Acoustic protection ActiveGard™
- Intensive use
- HD sound quality
- Lightweight and rugged: frame made from stainless steel and aluminium with reinforced Kevlar cable
- Leather earpads

poly HEADSETS



VOYAGER FOCUS UC B825

NO CHARGING STAND

Wireless Bluetooth headset that offers connectivity between PC, smartphone, tablets and Bluetooth devices.

- Available in both Standard UC and Microsoft Lync optimisations
- Smart Sensor technology - Answer calls by simply putting on the headset - mute by taking off and pausing music
- Dynamic Mute Alert: Headset sense when you try and talk when muted



VOYAGER 5200 UC B5200

Lightweight Bluetooth headset that connects to your PC, Smartphone, tablet and Bluetooth enabled deskphones.

- Compatible with Windows & Mac
- Talk Time: 7 hours | Standby Time: 9 Days
- Four adaptive microphones & DSP technology work together to block background noise
- SoundGuard hearing protection
- Bluetooth Range: 30 Meters
- Dedicated on/off switch - Volume control - Mute button

EPOS

Find a headset that suits your working style. Choose from affordable corded headsets and handy wireless headsets that let you leave your desk while on a call. All headsets are available in a QD version for your desk phone or a USB version for your computer, providing a versatile solution to your working requirements. Wireless headsets come in both Bluetooth and DECT versions, so you can ensure your connection is never interrupted.



Poly offers you the freedom to work whenever and wherever it suits you. Remote at your favourite coffee shop or bookstore? In the office, at a desk, and on the phone? Meeting with colleagues from across the world in a huddle space or larger conference room? No matter where you go and how you connect, Poly has a headset solution for you.

